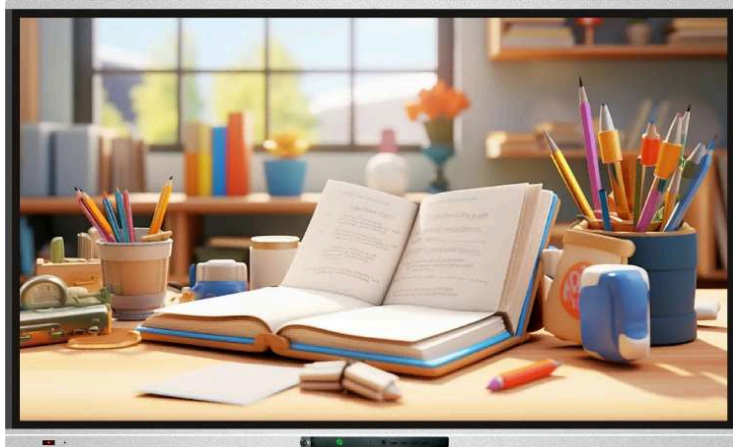


Interactive Flat Panel








Product Introduction

The **EIBOARD LED Interactive Touch Screen** is a multimedia display device that integrates imaging, audio, video, interaction, animation, AI, and PC technology into one unit. Upgraded from the traditional interactive smart board, it simplifies connection and installation.

With support for Wi-Fi 6, advanced AI capabilities, and the option to purchase an EDLA certificate, it is widely used in education, business, and corporate environments for efficient and intelligent presentations.

Quotation

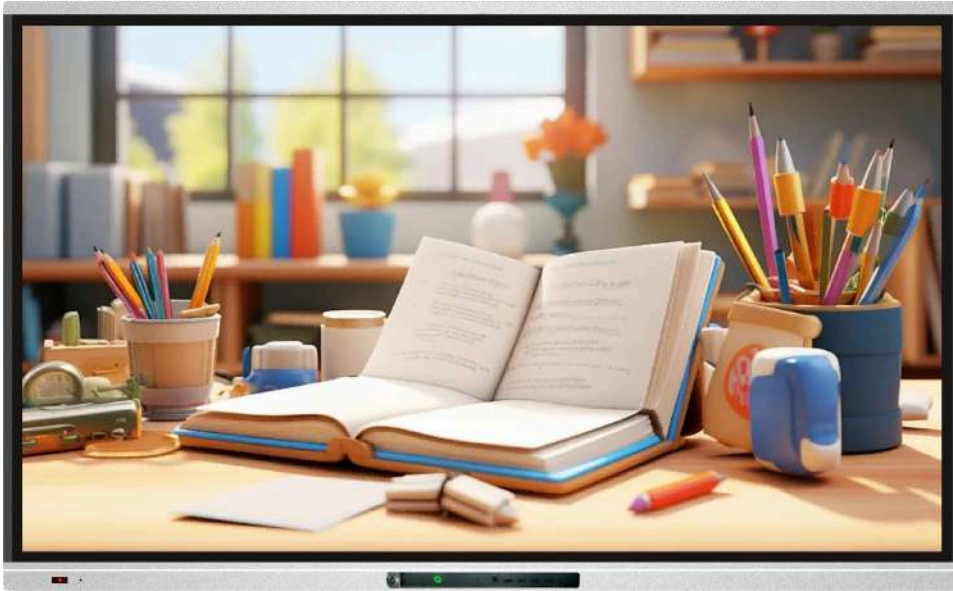
Items	Product & Model	Main Configurations	MOQ Quantity (PCS)	EXW Unit Price (USD \$/PCS)
1	Interactive Flat Panel  FC-65LED LV100	65" LED Interactive Touch Screen <ul style="list-style-type: none">* 20 points touch* 4K A grade panel with Anti-glare* Panel OS: Android 13.0, 8G RAM, 128G ROM* EDLA Certificate* Wifi 6	Bulk	TBD
2	Interactive Flat Panel  FC-75LED LV100	75" LED Interactive Touch Screen <ul style="list-style-type: none">* 20 points touch* 4K A grade panel with Anti-glare* Panel OS: Android 13.0, 8G RAM, 128G ROM* EDLA Certificate* Wifi 6	Bulk	TBD
3	Interactive Flat Panel  FC-86LED LV100	86" LED Interactive Touch Screen <ul style="list-style-type: none">* 20 points touch* 4K A grade panel with Anti-glare* Panel OS: Android 13.0, 8G RAM, 128G ROM* EDLA Certificate* Wifi 6	Bulk	TBD

4	Interactive Flat Panel  FC-98LED LV100	98" LED Interactive Touch Screen * 20 points touch * 4K A grade panel with Anti-glare * Panel OS: Android 13.0 , 128G RAM, 128G ROM * EDLA Certificate * Wifi 6	Bulk	TBD
5	OPS 	OPS * I5-11 th Gen, 8G, 256G, pre-install Windows 11 Pro * Teaching whiteboard software included	Bulk	TBD
Remarks: 1. Lead time: 7-15 working days . 2. Trade terms: EXW Huizhou Factory 3. Payment terms: 100% T/T before production 4. Valid time: 30 days				

Technical Specifications

Category	Model	FC-L65EA/Z	FC-L75EA/Z	
Machine Features	Packing Size	1620×1054×200mm	1845×1190×200mm	2110×1375×200mm
	Dimensions	1490×906×95mm	1710×1030×95mm	1957×1170×95mm
	Wall Size	1490×906×120mm	1710×1030×120mm	1957×1170×120mm
	Wall Mount Hole	500×400mm	600×400mm	800×400mm
	Sliding Door	No	No	No
	Net Weight	41Kg	56Kg	71Kg
	Gross Weight	52Kg	67Kg	82Kg
	Color	Iron Gray (other options)	Iron Gray (other options)	Iron Gray (other options)
Electrical Properties	Voltage Range	100-260VAC 50/60Hz	100-260VAC 50/60Hz	100-260VAC 50/60Hz
	Max Power	≤250W	≤300W	≤400W
	Standby Power	≤0.5W	≤0.5W	≤0.5W
Display Parameters	Size	1428.48×803.52mm	1649.66×927.93mm	1895.04×1065.96mm
	Resolution	3840×2160 (4K UHD)	3840×2160 (4K UHD)	3840×2160 (4K UHD)
	Brightness	>350cd/m ²	>350cd/m ²	>350cd/m ²
	Contrast	1200:1/4000:1	1200:1/4000:1	1200:1/4000:1
	Viewing Angle	178°	178°	178°
	Glass Protection	4mm fully tempered anti-glare explosion-proof glass		
System Parameters	System	Android 13/14, Windows (optional)	Android 13/14, Windows (optional)	Android 13/14, Windows (optional)
	CPU/GPU	Octa-core Cortex-A76×4; Cortex-A55×4, Mali-G610		

		MC4		
	Storage	8+64GB (standard), 8+128GB (optional)		
	Network	LAN/WIFI6, BT5.0	LAN/WIFI6, BT5.0	LAN/WIFI6, BT5.0
Port Parameters	Input Ports	HDMI3, USB 3.0, DP1, RS2321, TF1, MIC IN1, TYPE-C*1		
	Output Ports	HDMI OUT1, RJ45 OUT1, S/PDIF OUT1, Earphone1		
	Front Ports	USB3.0*2	USB3.0*2	USB3.0*2
Touch Parameters	Technology	Infrared, 20-point, HID driver-free		
	Response Time	<8ms	<8ms	<8ms
OPS Computer	CPU	Intel Core i3/i5/i7 (optional)		
	Memory	4GB/8GB DDR3/DDR4 (optional)		
	Storage	SSD 128G/256G/480G; HDD 500GB/1TB		
	System	Pre-installed Windows/Linux		
Environment	Operating Temp	0°C-40°C	0°C-40°C	0°C-40°C
	Storage Temp	-20°C~60°C	-20°C~60°C	-20°C~60°C
	Humidity	10%-90% (no condensation)	10%-90% (no condensation)	10%-90% (no condensation)
AI Features	Camera	1300W built-in; optional AI 4800W		
Accessories	Included	Wall mount, remote, power cord, touch pen, manual		



Application Cases



K12 Classrooms



Kindergartens



Conference



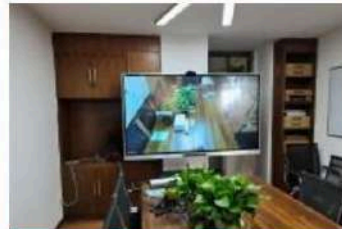
Interactive Classroom



Exhibition Presentation



Games Display



Meeting Room