



Interactive Flat Panel 75"

Android 14.0

EIBOARD Interactive Flat Panel is an all-in-one smart board supporting Android and Windows operating system, widely used in education and business to enhance learning and collaboration, allowing for more dynamic and engaging presentations.

It adopts infrared touch and zero-gap bonding technology, enhance the writing accuracy and faster respond that make a better user experience.



Official Website

4K

4K Original Panel

Zero-bonding makes writing more accurate, with A grade 4K touch panel.



Super Operation

Android 14.0,
Mali-G52 MP2(2EE)
Cortex- A55
Octa-core CPU,1.2GHz



Wireless Screen Share

Wireless screen share up to 9 devices(IOS,Android, Windows).



OTA Update

Providing OTA firmware and software feature updates.



Rich I/O Ports

Rich I/O ports support convenient connection with external devices.



Multiple User Logins

It supports 1 manage user and 4 ordinary users, to easily enter to different subject user space when the system is on.

Multi Users & Convenient Presentation

Smart writing interactive whiteboard supports 20/50 points finger touch, with easy annotation and gesture eraser.



0.5 mm Accuracy



0.006 S Response speed



Gesture Eraser

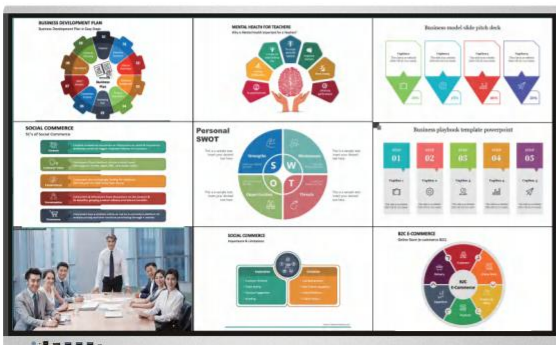
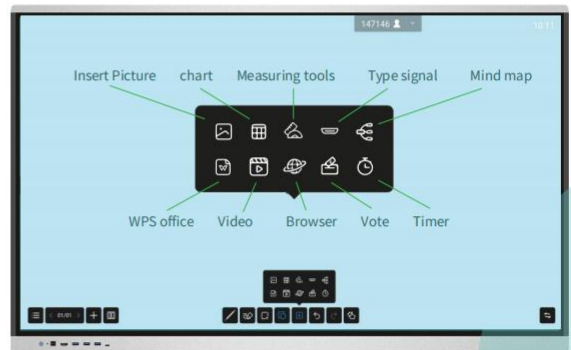


Multi Screen Writing

It supports split screen writing, two screen, three screen and four screen options for writing in different color simultaneously.

Multi Tools

Multifunctional and popular tools included in the whiteboard software, eg. insert pictures, chart, math tool, mind map, vote etc..



Wireless Screen Share

9 users screen share simultaneously supported. It supports to share local screen to selected members in group, also supports reverse control of local screen and annotation.



General Technical Parameters

LCD Panel	Screen Size	75"
	Screen Type	DLED
	Resolution	3840(H)×2160(V) (UHD)
	Color	10 bit 1.07B
	Active Size	1649.66*927.93mm
	Brightness	400cd/m2
	Contrast	4000:1 (according to panel brand)
	Viewing Angle	178°
	AG Glass	Tempered explosion-proof glass
	Backlight Lifetime	> 50000 hours
Electrical performance	Max Power	≤300W
	Standby Power	≤0.5W
	Voltage	110-240V(AC), 50/60Hz
Touch	Touch Technology	IR touch; 20 points for Android and 50 points for Windows; HIB Free drive
	Touch Items	Finger, Pen, any opaque objects
	Response Speed	≤ 6ms
	Operation System	Support Windows, Android, Mac OS, Linux
System	Android 14.0, V100 chips, Lango	
Processor	CPU: Cotex A55, 8 Cores, 1.2GHz ; GPU:Arm Mali-G52 MP2	
Storage	RAM 8GB, ROM 128G	
Network	LAN/WiFi 2.4G+5G, Bluetooth 5.0	
Speakers	Power	50W (25W*2)/ 8Ω
Working Environment	Working Temperature	0°C ~ 40°C
	Storage Temperature	- 20°C ~ 60°C
	Working Humidity	10%-90% non-condensing
Accessories	Power cable*1; Remote control*1; Touch pen*1; QC&Warranty card*1;Wall brackets*1	
	Support free to customize brand logo, booting logo, SKD package etc.	
I/O Interfaces	Input Ports: HDMI-in, LAN(RJ45), AV in(mini),USB 3.0, USB2.0, RS232 , Touch USB, OPS Slot Output Ports: Coaxial,AV, Earphone, Mic, HDMI out, Front Ports : HDMI-in,Type-C, Touch USB, USB 3.0	
Featured Apps	4K Whiteboard, Screen Share, Split Screen, Browser, PlayStore, Screen Lock, Annotation, FileTransfer, FileBrowser, Calender, Welcome Page, ScreenShot, Screen Record ,Annotation, Vote ...	

OPS for Windows System (Optional, NOT Included)

OPS Type	OPS-C ; 80-Pin
Dimension	195*180*42mm
CPU	Intel I5-11th generation (I3/I5/I7 as option)
Memory	8G DDR4 (4G/8G/16G/32G as option)
Storage	256 G SSD (128G/256G/512G/1T as option)
Operating System	Pre-install or OEM Licensed Windows 10/11 Pro as option

Product Dimension

Items / Model No.	FC-75LED
Packing dimension	1822* 200*1180mm
Product dimension	1716.5* 86*1028.5mm
Wall mount VESA	600*400mm
Weight(N.W/G.W)	49.5kg/64kg